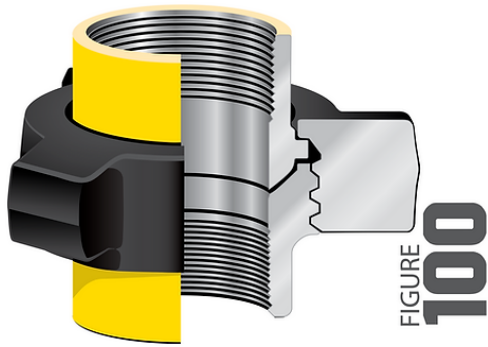




HAMMER UNIONS

Fig No.	Standard Service		Pipe Size (in.)									End Connection
	CWP	Test	1	1¼	1½	2	2½	3	4	6	8	
	SUB	NUT										
100	1,000	1,500				✓	✓	✓	✓	✓	✓	T
200	2,000	3,000	✓	✓	✓	✓	✓	✓	✓	✓		T/BW
202	2,000	3,000							✓			T
206	2,000	3,000	✓	✓	✓	✓	✓	✓	✓	✓		T/BW
211	2,000	3,000	✓			✓						T/BW
300	2,000	3,000	✓			✓	✓	✓	✓			T
301	3,000	4,500	✓			✓		✓				T
400	4,000	6,000				✓		✓	✓			T/BW
600	6,000	9,000	✓		✓	✓		✓	✓			T/BW
602	6,000	9,000	✓		✓	✓		✓	✓			T/BW
607	6,000	9,000			✓	✓						T
1002	10,000	15,000	✓		✓	✓		✓	✓			T/BW
1502	15,000	22,500				✓		✓				T/BW

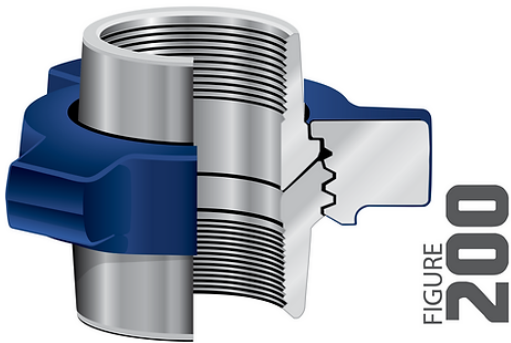


1,000 PSI CWP — 1,500 PSI TEST

Color Code: Yellow Subs/Black Nut

Material: A105 Forged Steel

Economical union with precision machined metal-to-metal sealing surfaces. Low pressure service. Manifold and general service.



2,000 PSI CWP — 3,000 PSI TEST

Color Code: Gray Subs/Blue Nut

Material: A105 Forged Steel

It meets most requirements in the medium pressure ranges. Precision seating surfaces assure dependable pressure seal. A great general purpose union.

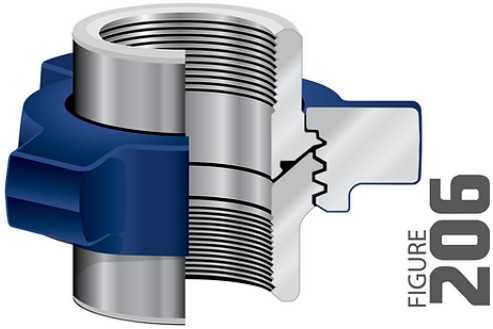


FIGURE
206

2,000 PSI CWP — 3,000 PSI TEST

Color Code: Gray Subs/Blue Nut

Material: A105 Forged Steel

This union has O-Ring Seal added to the Male Sub, which functions as a secondary seal.

Subs and Nuts of the Figure 206 union are interchangeable with the Figure 200.

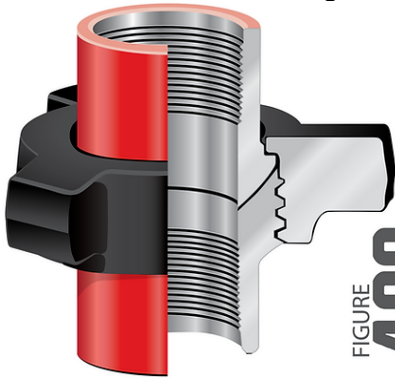


FIGURE
400

4,000 PSI CWP — 6,000 PSI TEST

Color Code: Red Subs/Black Nut

Material: AISI1040 Forged Steel

It features a precision ball and cone sealing surface for sure metal- to-metal seal. Ideal for manifold and pumping service.

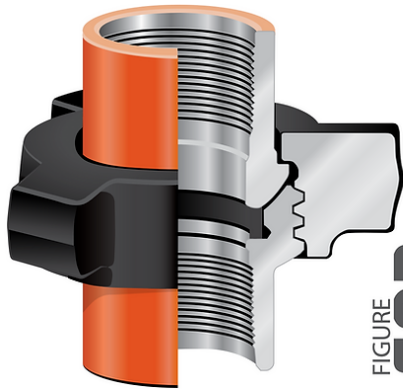


FIGURE
602

6,000 PSI CWP — 9,000 PSI TEST

Color Code: Orange Subs/Black Nut

Material: AISI4130/4140 Forged Steel

It has a replaceable lip-type seal ring of Buna-N specifically designed to minimize fluid flow turbulence. The replaceable lip-type ring also provides a pressure seal and protection for the metal-to-metal seating surfaces. These unions are recommended for manifold and truck mounting where size and weight are critical.

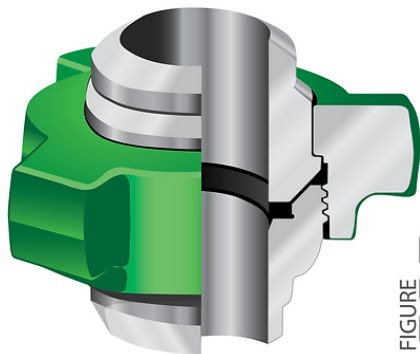


FIGURE
602

6,000 PSI CWP — 9,000 PSI TEST

Color Code: Orange Subs/Black Nut

Material: AISI4130/4140 Forged Steel

It has a replaceable lip-type seal ring of Buna-N specifically designed to minimize fluid flow turbulence. The replaceable lip-type ring also provides a pressure seal and protection for the metal-to-metal seating surfaces. These unions are recommended for manifold and truck mounting where size and weight are critical.

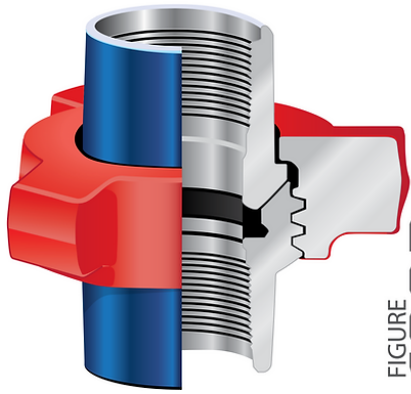


FIGURE
1002

10,000 PSI CWP — 15,000 PSI TEST

Color Code: Blue Subs/Red Nut

Material: AISI4130/4140 Forged Steel

It is made of alloy steel forgings for high-pressure manifold and treating connections, such as cementing, fracturing, and acidizing. Employs a double seal that combines an elastomeric gasket with a metal-to-metal connection.

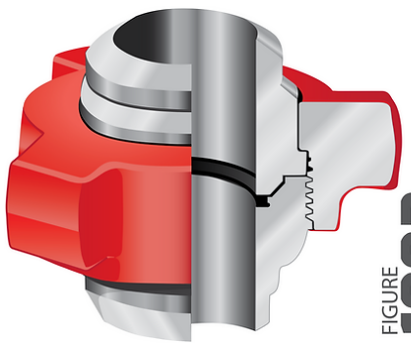


FIGURE
1002

10,000 PSI CWP — 15,000 PSI TEST

Color Code: Blue Subs/Red Nut

Material: AISI4130/4140 Forged Steel

It is made of alloy steel forgings for high-pressure manifold and treating connections, such as cementing, fracturing, and acidizing. Employs a double seal that combines an elastomeric gasket with a metal-to-metal connection.

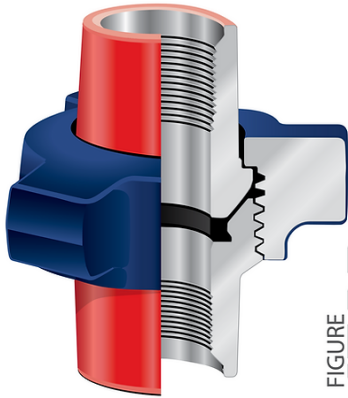


FIGURE
1502

15,000 PSI CWP — 22,500 PSI TEST

Color Code: Red Subs/Blue Nut

Material: AISI4130/4140 Forged Steel

It has a replaceable lip-type seal ring of Buna-N specifically designed to minimize fluid flow turbulence. The lip-type ring also provides a pressure seal and protection for the metal-to-metal seating surfaces. These unions are recommended for manifold and truck mounting or other installations where extreme high pressure is encountered.

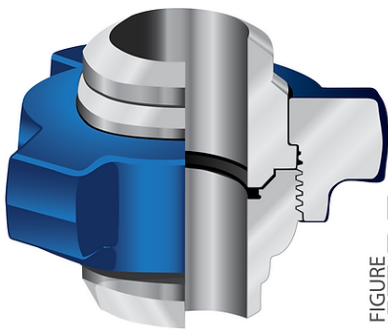


FIGURE
1502

15,000 PSI CWP — 22,500 PSI TEST

Color Code: Red Subs/Blue Nut

Material: AISI4130/4140 Forged Steel

It has a replaceable lip-type seal ring of Buna-N specifically designed to minimize fluid flow turbulence. The lip-type ring also provides a pressure seal and protection for the metal-to-metal seating surfaces. These unions are recommended for manifold and truck mounting or other installations where extreme high pressure is encountered.